

# 20 | BASF in Greater China

## 25 | Facts & Figures

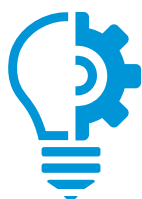
### Sales

BASF Group <sup>1</sup> (billion €)		BASF in Greater China <sup>1</sup> (billion €)	
2025	2024	2025	2024
59.7	61.4	8.2	7.8

### Employees and society

	2025	2024
<b>Employees (as of December 31)</b>		
Employees BASF Group	108,251	111,822
Employees BASF in Greater China	12,452	12,687
Gender among BASF employees in Greater China		
Women	% 26.4	26.6
Men	% 73.6	73.4
<b>Donation and Sponsoring in Greater China</b>		
Total spend	million € 0.79	0.27

### Focus areas



#### Innovation

10%

Percentage of employees in Greater China engaged in research and development



#### Sustainability

27.3%

Reductions of greenhouse emissions<sup>2</sup> in Greater China compared with 2018



#### People

16 consecutive years

Honored as China's Top Employer in China



#### Safety

Since 1992

BASF has implemented Responsible Care<sup>®</sup> globally and was recognized as Responsible Care Star<sup>3</sup> in 2025 in China

<sup>1</sup> The sales data for 2024 has been restated (excluding the discontinued coatings business, in line with the presentation in the Consolidated Financial Statements of the BASF Group).

<sup>2</sup> Scope 1 and Scope 2 (excluding the sale of energy to third parties).

<sup>3</sup> The award was received at the 2025 China Responsible Care Promotion Conference.

## Environmental protection, health and safety

		2025	2024 <sup>1</sup>
<b>Energy</b>			
Energy consumption	million MWh	3.26	3.55
<b>Water</b>			
Water withdrawal / supply	million cubic meters per year	13.14	12.42
Water used in production	%	44.40	44.74
Water used in cooling processes	%	55.60	55.26
<b>Emissions to air</b>			
Greenhouse gas emissions: CO <sub>2</sub> , N <sub>2</sub> O, CH <sub>4</sub> , HFC, PFC, SF <sub>6</sub>	metric tons of CO <sub>2</sub> equivalents	886,315.76	1,066,900.90
<b>Waste</b>			
Waste generation	metric tons	113,430.99	114,478.60
of which waste recovered	%	76.62	74.64
<b>Occupational safety</b>			
Rate of High Severity Work Process Related Injuries (HSI)	per 1,000,000 working hours	0.00	0.02
Number of fatalities as a result of work-related injuries and work related ill health		0.00	1.00
<b>Process safety</b>			
Rate of process safety incidents (PSI)	per 1,000,000 working hours	0.12	0.03
Rate of High Severity Process Safety Incidents (hsPSI)	per 1,000,000 working hours	0.01	0.00

» The BASF Report 2025 has been again prepared based on the ESRS (European Sustainability Reporting Standards). Regarding the publication of EHS data, the indicators in this local publication have been aligned based on those published in the BASF Report 2025 in line with the materiality assessment. Consolidated information on EHS data of the BASF Group is available in the BASF Report 2025 <https://report.basf.com/2025/en>.

### Further Information

You can find this and other BASF publications online at [basf.com](https://www.basf.com).

### Published by

Communications,  
Greater China, BASF

### Media contact

Jamie Zhu  
Tel: 86-21-2039 1438  
email: [jamie.zhu@basf.com](mailto:jamie.zhu@basf.com)

Cassie Chen  
Tel: 86-21-3810 9004  
email: [cassie.chen@basf.com](mailto:cassie.chen@basf.com)

<sup>1</sup> The figure for 2024 was adjusted due to increased data availability.