

## BASF UK Group Pension Scheme Investment Fund Performance

### What investment funds are available?

Official fund factsheets are available for each of the funds on the [Pension Website](#):

- Adventurous Fund
- Moderate Fund
- Cautious Fund
- Ethical Equity Fund
- Islamic Equity Fund
- Pre-Retirement Annuity Fund
- Liquidity Environmentally Aware Fund
- Sukuk Fund

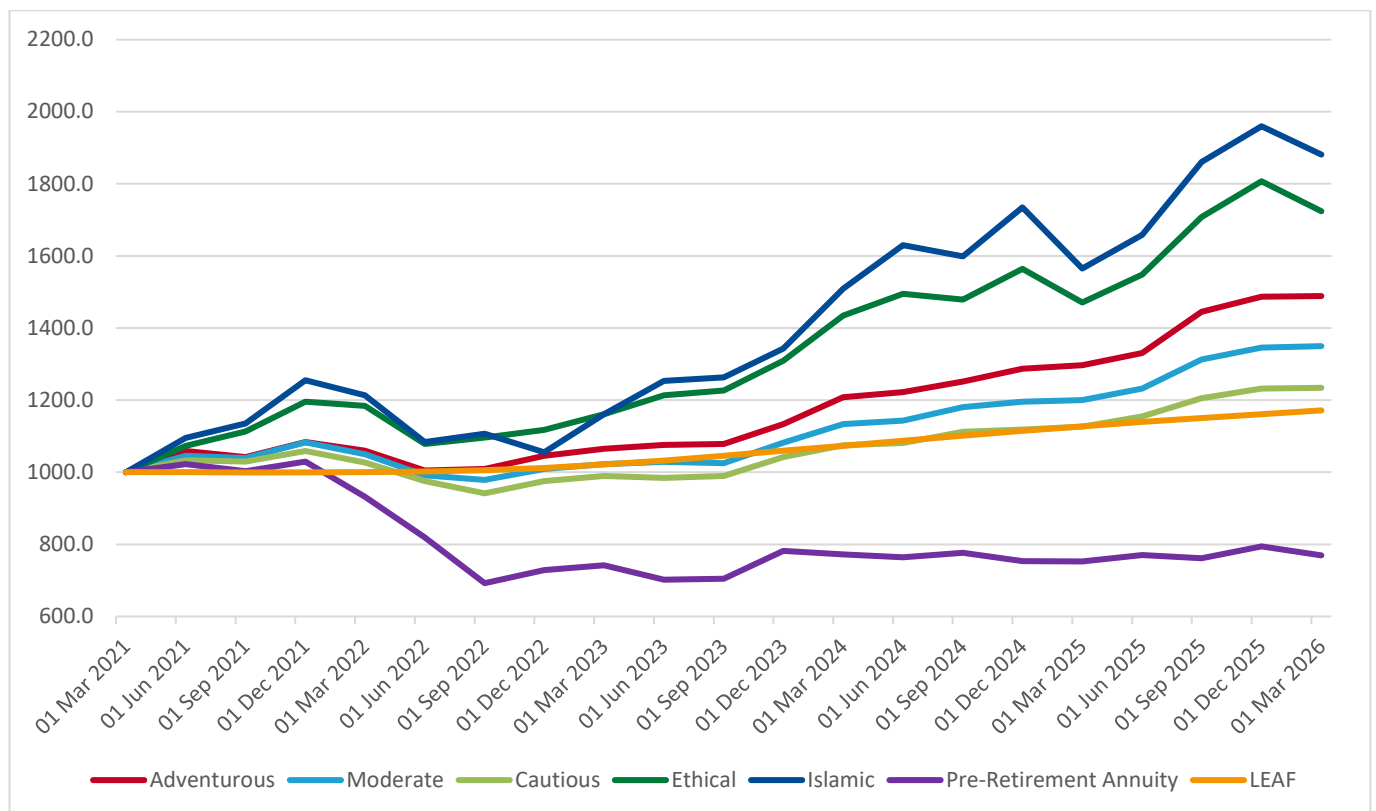
### Changing your investments

If you wish to change your investments, you can complete changes online using the [Pension Portal](#).



### Fund Performance

The graph below shows cumulative performance of all funds from 31 March 2021 to 31 March 2026. Showing the growth of **£1,000** (after deduction of fees).



### Invested in LifePlan? What to look for...

Depending on your chosen retirement option (Annuity, Drawdown, or Cash), as you approach your target retirement date, some of your funds are automatically moved into lower risk funds.

Details of how these changes work are shown in the [Investment Guide](#) on the [Pension Website](#).

## BASF UK Group Pension Scheme Investment Fund Performance



### Fund Performance

The tables below show how each fund has performed over certain time-periods and during each complete calendar year.

*\* Performance is always shown on a per annum basis where the period is greater than one year.*

You can view your own fund performance on the [Pension Portal](#).

Fund	3 Months	1 Year	3 Years*	5 Years*
<b>Adventurous Fund</b>	0.05%	14.70%	11.77%	8.27%
<b>Moderate Fund</b>	0.28%	12.39%	9.68%	6.17%
<b>Cautious Fund</b>	0.20%	9.56%	7.66%	4.31%
<b>Ethical Fund</b>	(4.56%)	17.28%	14.09%	11.52%
<b>Islamic Fund</b>	(4.04%)	20.24%	17.48%	13.45%
<b>Pre-Retirement Annuity Fund</b>	(3.08%)	2.40%	1.25%	(5.07%)
<b>Liquidity Environmentally Aware Fund (LEAF)</b>	0.91%	4.06%	4.71%	3.23%
<b>Sukuk Fund</b>	1.04%	n/a	n/a	n/a

Fund	2025	2024	2023	2022
<b>Adventurous Fund</b>	15.53%	13.61%	8.30%	(3.49%)
<b>Moderate Fund</b>	12.57%	10.53%	7.10%	(6.82%)
<b>Cautious Fund</b>	10.15%	7.43%	6.70%	(7.81%)
<b>Ethical Fund</b>	15.46%	19.56%	17.10%	(7.81%)
<b>Islamic Fund</b>	12.99%	29.29%	27.20%	(15.59%)
<b>Pre-Retirement Annuity Fund</b>	5.45%	(3.58%)	7.40%	(29.24%)
<b>Liquidity Environmentally Aware Fund (LEAF)</b>	4.29%	5.18%	4.60%	1.26%

### Understanding the information

This factsheet is updated quarterly and has been produced to help you understand how the funds would have performed had they been in place over the periods shown. It should not be used on its own for making investment decisions.

As always, past performance is not a guide to future performance.

