

BASF UK Group Pension Scheme Investment Fund Performance

What investment funds are available?

Official fund factsheets are available for each of the funds on the [Pension Website](#):

- Adventurous Fund
- Moderate Fund
- Cautious Fund
- Ethical Equity Fund
- Islamic Equity Fund
- Pre-Retirement Annuity Fund
- Sterling Liquidity Fund

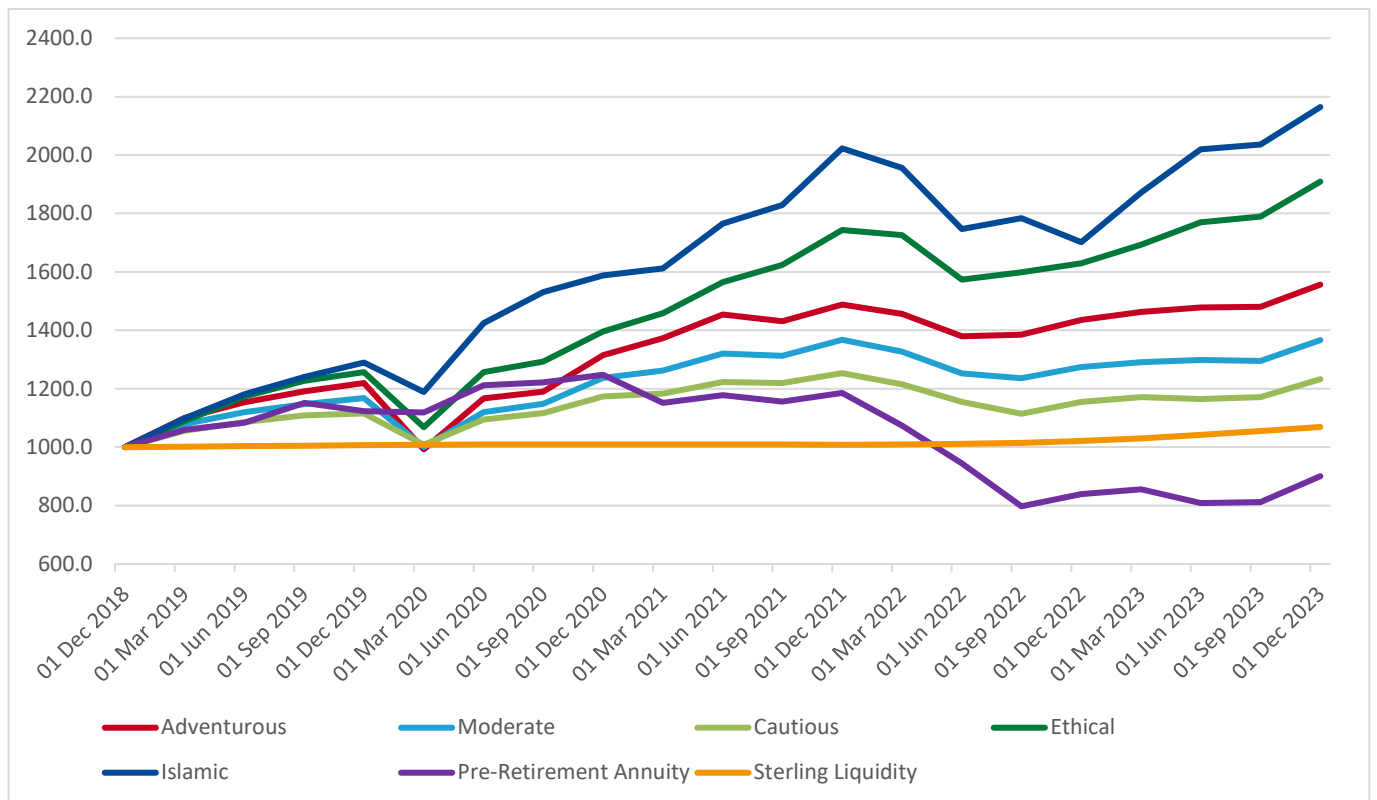
Changing your investments

If you wish to change your investments, you can complete changes online using the [Pension Portal](#).



Fund Performance

The graph below shows cumulative performance of all funds from 31 December 2018 to 31 December 2023. Showing the growth of £1,000 (after deduction of fees).



Invested in LifePlan? What to look for...

Depending on your chosen retirement option (Annuity, Drawdown, or Cash), as you approach your target retirement date, some of your funds are automatically moved into lower risk funds.

Details of how these changes work are shown in the [Investment Guide](#) on the [Pension Website](#).

BASF UK Group Pension Scheme Investment Fund Performance



Fund Performance

The tables below show how each fund has performed over certain time-periods and during each complete calendar year.

** Performance is always shown on a per annum basis where the period is greater than one year.*

You can view your own fund performance on the [Pension Portal](#).

| Fund | 3 Months | 1 Year | 3 Years* | 5 Years* |
|------------------------------------|----------|--------|----------|----------|
| Adventurous Fund | 5.1% | 8.3% | 5.8% | 9.2% |
| Moderate Fund | 5.5% | 7.1% | 3.3% | 6.4% |
| Cautious Fund | 5.3% | 6.7% | 1.7% | 4.3% |
| Ethical Fund | 6.7% | 17.1% | 11.0% | 13.8% |
| Islamic Fund | 6.3% | 27.2% | 11.0% | 16.6% |
| Pre-Retirement Annuity Fund | 11.0% | 7.4% | (10.3%) | (2.1%) |
| Sterling Liquidity Fund | 1.3% | 4.6% | 1.9% | 1.3% |

| Fund | 2023 | 2022 | 2021 | 2020 |
|------------------------------------|-------|----------|---------|--------|
| Adventurous Fund | 8.3% | (3.49%) | 13.28% | 7.75% |
| Moderate Fund | 7.1% | (6.82%) | 10.60% | 5.83% |
| Cautious Fund | 6.7% | (7.81%) | 6.83% | 5.13% |
| Ethical Fund | 17.1% | (6.53%) | 24.90% | 11.06% |
| Islamic Fund | 27.2% | (15.59%) | 27.20% | 21.37% |
| Pre-Retirement Annuity Fund | 7.4% | (29.24%) | (4.94%) | 11.09% |
| Sterling Liquidity Fund | 4.6% | 1.26% | (0.08%) | 0.23% |

Understanding the information

This factsheet is updated quarterly and has been produced to help you understand how the funds would have performed had they been in place over the periods shown. It should not be used on its own for making investment decisions.

As always, past performance is not a guide to future performance.

