

Temporary, furnished accommodation

An der Froschlache 3 or 23 67063 Ludwigshafen

Apartment (3 bedrooms / 1 person per bedroom) _____

Equipment

The apartment (3 bedrooms, 124 m²) An der Froschlache is fully furnished and equipped. It offers a bathroom, a guest-toilet, two store rooms, a wash-dryer, a fully equipped kitchen, a living room, a dining room and 3 bedrooms (bed, desk, chair, wardrobe) with balcony.

Price

2.100 EUR monthly rent

plus nonrecurring 400 EUR final cleaning fee, that is charged at the beginning

The rent includes the cost of electricity, water, heating, Internet (Wi-Fi), cable-TV as well as the radio and TV license fee.

Payment: SEPA direct debit mandate, bank transfer or cash.

Lease beginning and end

One month's rent will be charged at least, even with shorter occupancy.
Depending on availability

- lease beginning is either the 1. or 16. of the month
- lease end is either the 30./31. or 15. of the month (9.00 check out)

Exception: If the rental contract end is a holiday or a weekend, we will shorten the rental contract end to the last working day of the month.

Notice Period

Premature termination must be received by us in writing on the 3rd working day of the previous month, otherwise the monthly rent is invoiced.

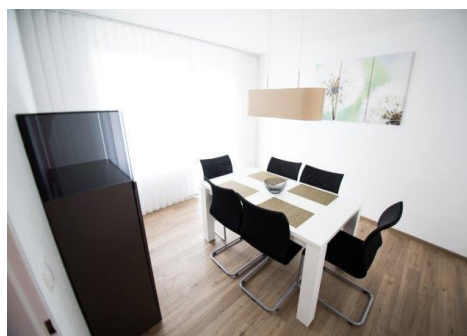
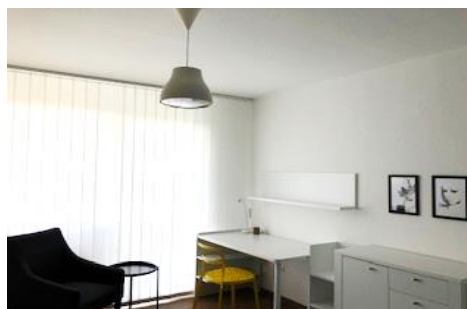
Location

- bus stop behind the building in Sternstraße and Burbacherstraße;
- Rental bikes; more info: <http://www.vrnnextbike.de/en>
- close to BASF and the center of Ludwigshafen und Mannheim
- public parking spaces are available in the surrounding area.

Temporary, furnished accommodation

An der Froschlache 3 or 23 67063 Ludwigshafen

Apartment (3 bedrooms / 1 person per bedroom)



Temporary, furnished accommodation

An der Froschlache 3 or 23 67063 Ludwigshafen

Apartment (3 bedrooms / 1 person per bedroom) _____

Check in

Arrival – Hand over of keys

The keys to the apartment are deposited for collection on the day of the lease beginning at the plant security, next to the visitor center, at **Tor 2 (Gate 2)**.

Rental contract

You find the rental contract in the apartment on your arrival. We kindly ask you to sign the duplicates and send them back to us as soon as possible. You will find the WiFi – Access – Code on the back of the router in the living room.

Check out

Inform us about your exact move out day

Please tell us about 2 weeks in advance, on which day you plan to move out and return the keys.

Return of keys at check out

Are you planning to move out on the last day of our lease end in your rental contract? Then note please, that you have to return the keys at 9.00 a.m. **(in the morning)** the latest at **Tor 2 (Gate 2)** next to the BASF Visitor Center.

How we expect you to leave the apartment

We ask you to leave the apartment in a clean and tidy condition. Cleaning and washing of linen and towels is not necessary. Please report defects.

For questions and suggestions, we are looking forward to your call!

BASF Wohnen + Bauen GmbH
Kurzzeitwohnen
Brunckstraße 49, 67063 Ludwigshafen
Tel.: 0621 60 - 91614
E-Mail: bwb.kurzzeitwohnen@basf.com

Temporary, furnished accommodation

An der Froschlache 3 or 23 67063 Ludwigshafen

3-people-flat-share (3 bedrooms / 1 person per bedroom)



For better orientation see the map above.

The apartment is located An der Froschlache 3 in Ludwigshafen-Friesenheim.

Bus-/Tram connections are available at www.vrn.de mobile and as an app.