

An aerial, top-down view of a dense urban landscape, likely Dubai, featuring a mix of modern skyscrapers, older buildings, and a complex network of roads and highways. The perspective is looking straight down, showing the intricate patterns of the city's infrastructure.

Our world is constantly changing  
The world needs solutions  
**We need you**

 **BASF**

We create chemistry

## Jobs in B&C Functions

Exciting projects and a global environment: We need your expertise and your enthusiasm to drive our corporate success forward.

- Controlling, Finance and Accounting
- Information Technology
- Legal, Taxes & Insurance
- Logistics & Supply Chain Management
- Procurement
- Human Resources
- Consulting
- Internal Audit
- Marketing & Sales
- PR & Communication



## CV

- Personal details
- Practical experience and education in reverse chronological order
- **Focus area** of thesis projects, internships, projects
- Qualifications: Languages, software applications, experiences abroad etc.
- Specification of published work, projects, extracurricular activities, volunteer work, etc.
- Layout in the same style as cover letter



## What stands out in an excellent application?

- Strong university background and career motivation
- University/practical experience overseas
- **Authenticity**
- Awards, scholarships, published work



## Cover letter

- Ideally one page
- State the reference code or title of the job advertisement
- **Reason** for applying
- Describe competencies (select those that are relevant to the position; examples)
- Spelling and expression



## Direct entry

- Wide variety of possible entry roles, tasks and responsibility for projects from the beginning
- On-the-job training by experienced colleagues and advanced seminars
- Onboarding Program **BE PART** for a smooth start
  - Getting started (the first 100 days)
  - Getting up to speed (the first year)
  - Working & developing (after one year)



## Trainee Program

### Insights & Responsibility

- Personal and professional support from a mentor
- Duration: **18–36 months**
- Start: flexible and depending on availability of the applicant
- In-depth insights into various roles, BASF areas or countries with assignment of responsibilities from the beginning



## Explore together

### The International Internship



- Duration: **3–6 months**
- Completing final years of Bachelor or Master, relevant internships, very good English language skills, ideally target country language skills, volunteer work and international experience
- Attractive benefits package including payment of flights and visas
- Apply online for advertised positions approx. 6 months in advance

## Internships & Thesis Projects



- Practical experience over **3–6 months**
- Induction sessions, plant tours, regular get-togethers and lectures from specialists
- Possible to combine internships with thesis projects (in Germany)
- Apply online 2–4 months in advance – speculative applications possible

# BASF at a glance

**BASF**  
We create chemistry

## Employees:

**111,047** employees  
worldwide **3,174** apprentices

more than  
**51,000** employees in  
Germany



## Production:



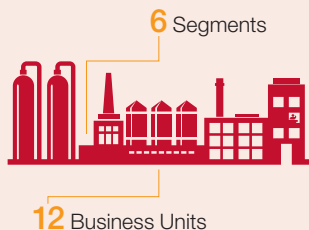
**Intelligent Verbund principle**

**Production – Technology – Market – Digitalization**

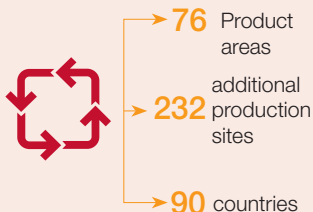
more than **90,000** customers  
worldwide

over **75,000** suppliers

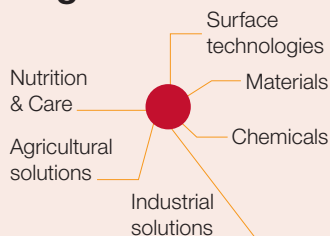
## Organization:



## Verbund system:



## Segments:



We create chemistry for a sustainable future.



## Finances:

Sales: **€78,6** | EBIT: **€7,8** bn



## Sustainability:

Expenditure on  
environmental protection around **€328** m

Environmental relief  
from saving energy: **6.4** m tons CO<sub>2</sub>

Involved in **UN Global Compact** since



## Innovation:

Expenditure on  
Research & Development **€2,2** bn



Employees  
in the area  
Research & Development  
more than **10,000**

around **1,000** patents

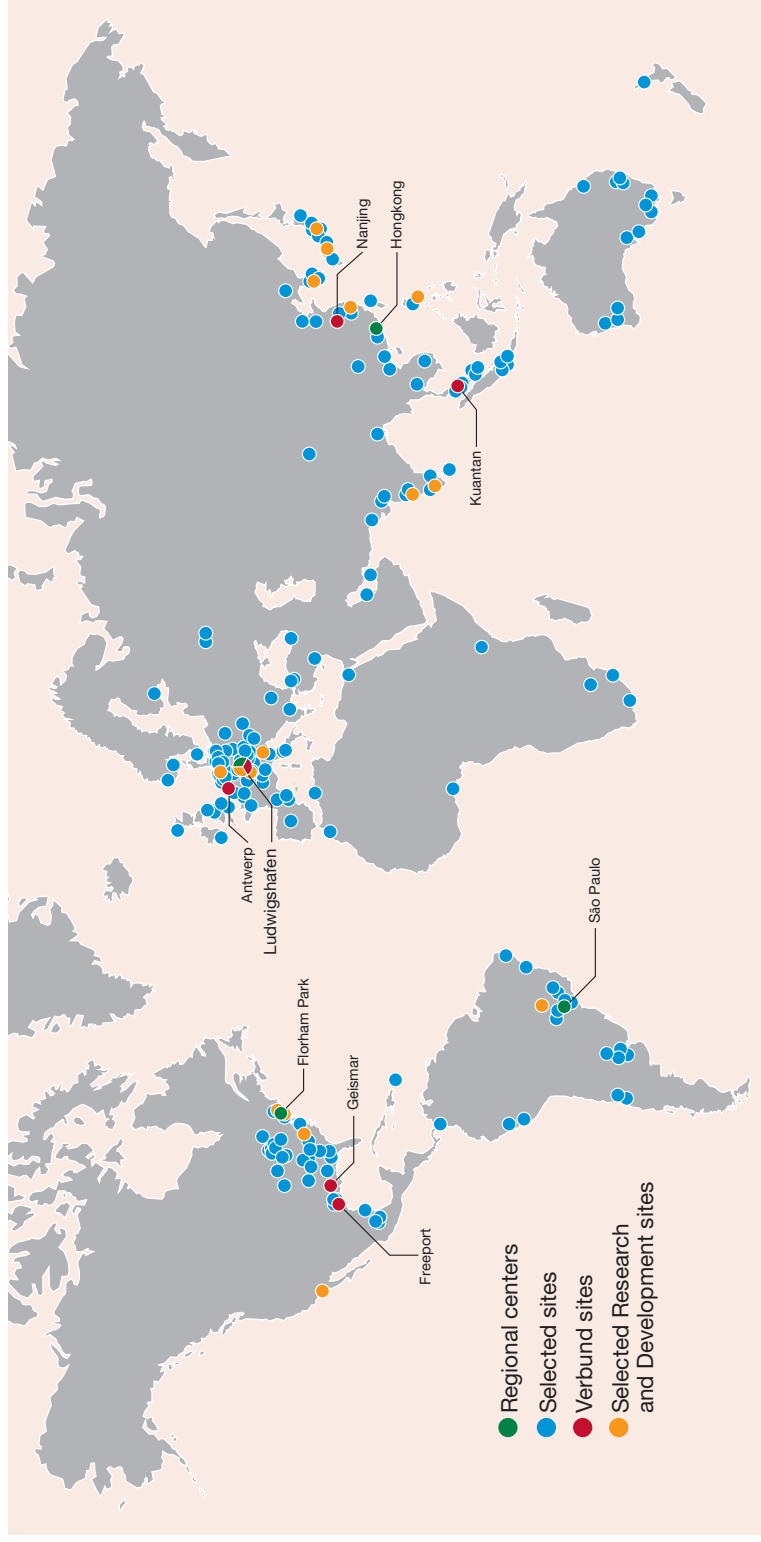
about **3,000** production facilities



# BASF at a glance



We create chemistry



# Sites in Germany



We create chemistry



# Ludwigshafen site



**~ 34.405**

BASF SE  
employees



**~ 230 km**

of tracks



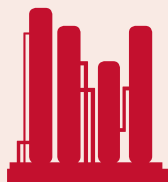
**~ 2,000**

buildings



**~ 106 km**

of roads



**~ 200**

production  
facilities



**~ 2,850**

pipeline  
systems



**Several  
thousand**

products are  
created at the site



**8.5 m tons**

of finished products  
per year

- Largest integrated chemical complex in the world
- Birthplace of the Verbund concept
- Intelligent networking of production facilities, energy flows and logistics
- Resources used as efficiently as possible

# Daily life at BASF

**BASF**  
We create chemistry

As the leading chemical company, we work on products every day for a sustainable future and we're busy today finding solutions for tomorrow's problems. Innovations in chemistry play a critical role and make a lasting contribution to existing and future solutions in almost all industry segments.



# Application process



## Notes



We create chemistry

[illegible]

## Notes



We create chemistry

[illegible]

**[www.basf.com/career](http://www.basf.com/career)**

Phone

00800 – 33 0000 33  
(free of charge in Europe)

WhatsApp

+49 176 42067319

E-Mail

[jobs@basf.com](mailto:jobs@basf.com)

