



Our world is constantly changing  
The world needs solutions  
**We need you**

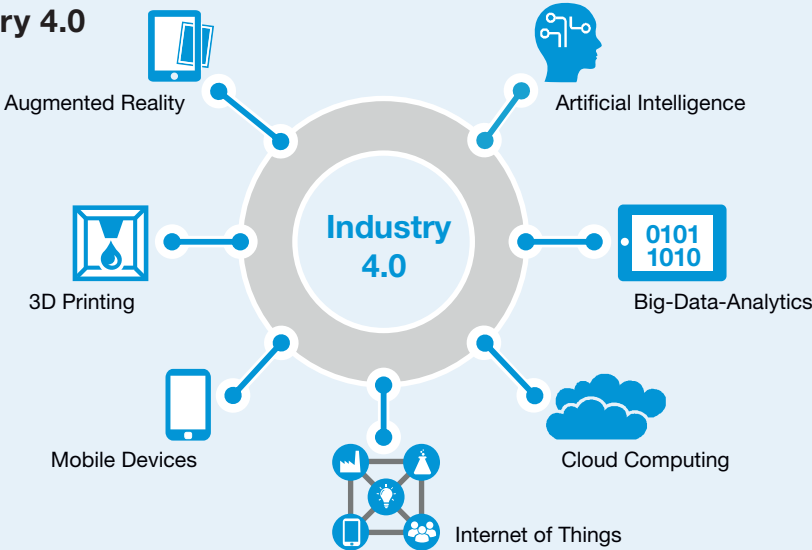
 **BASF**

We create chemistry

Areas



Industry 4.0



## Direct entry

- Wide variety of possible entry roles, tasks and responsibility for projects from the beginning
- On-the-job training by experienced colleagues and advanced seminars
- Onboarding Program **BE PART** for a smooth start
  - Getting started (the first 100 days)
  - Getting up to speed (the first year)
  - Working & developing (after one year)



## Explore Together

### Our International Program

- Duration: **3–6 months**
- Completing final years of bachelor's or master's degree, relevant previous internships, very good English language skills, ideally target country language skills, volunteer work and international experience
- Attractive benefits package including payment of flights and visas
- Apply online for advertised positions approx. 6 months in advance



## Internships & Thesis Projects

- Practical work experience related to project over **3–6 months**
- Induction sessions, plant tours, regular get-togethers and lectures from specialists
- Possible to link internships with thesis projects (in Germany)
- Apply online 2–4 months in advance – speculative applications possible



# BASF at a glance

## Employees:

**111,047** employees  
worldwide **3,174** apprentices



more than  
**51,000** employees in  
Germany



## Production:



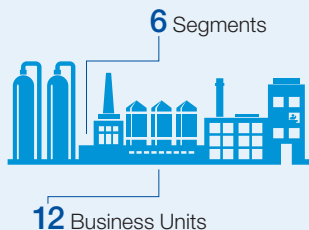
Intelligent Verbund principle

Production – Technology – Market – Digitalization

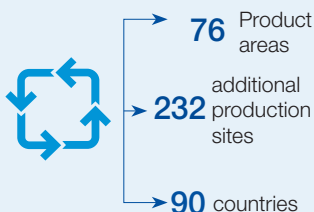
more than **90,000** customers  
worldwide

over **75,000** suppliers

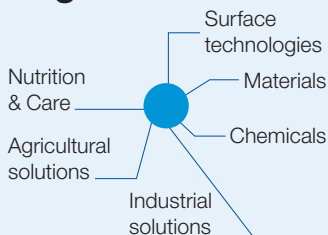
## Organization:



## Verbund system:



## Segments:



We create chemistry for a sustainable future.



## Finances:

Sales: **€78,6** | EBIT: **€7,8** bn



## Sustainability:

Expenditure on  
environmental protection around **€328** m



Environmental relief  
from saving energy: **6.4** m tons CO<sub>2</sub>

Involved in **UN Global Compact** since

## Innovation:

Expenditure on  
Research & Development **€2,2** bn



Employees  
in the area  
Research & Development  
more than **11,000**

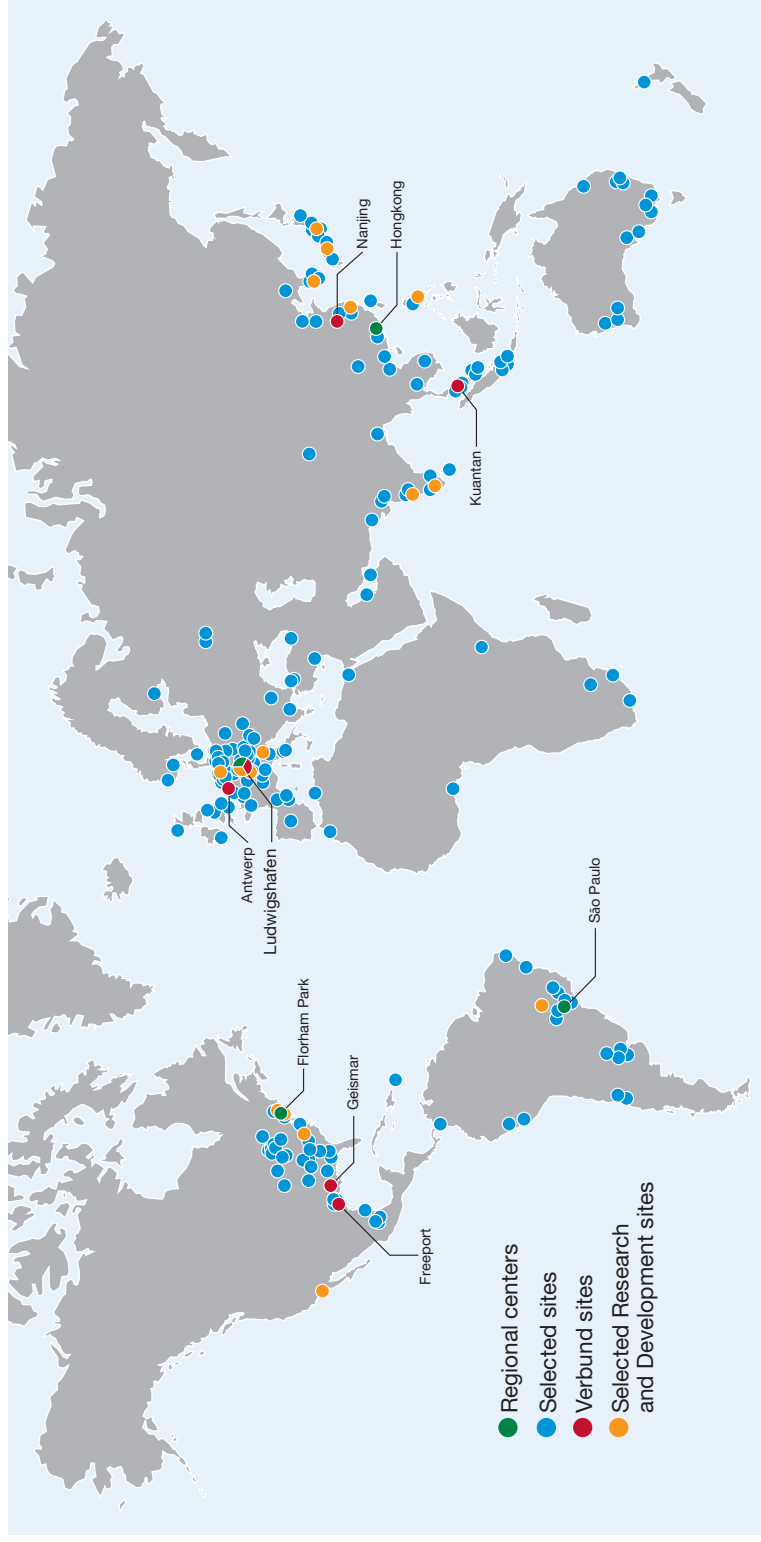
around **1,000** patents

about **3,000** production facilities

# BASF at a glance



We create chemistry



# Sites in Germany



# Ludwigshafen site

 **BASF**

We create chemistry



**~ 34.405**

BASF SE  
employees



**~ 230 km**

of tracks



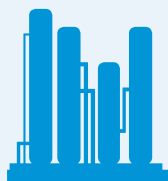
**~ 2,000**

buildings



**~ 106 km**

of roads



**~ 200**

production  
facilities



**~ 2,850**

pipeline  
systems



**Several  
thousand**

products are  
created at the site



**8.5 m tons**

of finished products  
per year

- Largest integrated chemical complex in the world
- Birthplace of the Verbund concept
- Intelligent networking of production facilities, energy flows and logistics
- Resources used as efficiently as possible

[basf.com/career](https://basf.com/career)

# Daily life at BASF



We create chemistry

As the leading chemical company, we work on products every day for a sustainable future and we're busy today finding solutions for tomorrow's problems. Innovations in chemistry play a critical role and make a lasting contribution to existing and future solutions in almost all industry segments.



**basf.com/career**



# Application process



## Notes



We create chemistry

[illegible]

## Notes



We create chemistry

This image shows a full page of white paper with horizontal blue lines, resembling notebook paper. The lines are evenly spaced and run across the width of the page. In the bottom right corner, there is a small blue icon of a notepad with a pencil, indicating it's a template for notes or writing.

**[www.basf.com/career](http://www.basf.com/career)**

Phone

00800 – 33 0000 33  
(free of charge in Europe)

WhatsApp

+49 176 42067319

E-Mail

[jobs@basf.com](mailto:jobs@basf.com)

