



70% of people will be living in cities by 2050

The world needs solutions

**We need you**

 **BASF**

We create chemistry

## Work environment

Exciting projects and a global environment: We need your expertise and your enthusiasm to drive our corporate success forward.

- Development engineering
- Project planning in plant engineering and construction
- Production, assembly & maintenance
- Discipline engineering
- Automation technology
- Technical expert
- Supply chain and logistics
- Environment, security, infrastructure
- Marketing, purchasing and sales
- And more!



## CV

- Personal details
- Practical experience and education in reverse chronological order
- **Focus area** of thesis projects, internships, projects
- Qualifications: Languages, software applications, experiences abroad etc.
- Specify published work, projects, extracurricular activities, volunteer work, etc.
- Layout in the same style as cover letter



## What stands out in an excellent application?

- Strong university background and career motivation
- University/practical experience overseas
- **Authenticity**
- Awards, scholarships, published works



## Cover letter

- Ideally one page
- State the reference code or title of the job advertisement
- **Reason** for applying
- Describe competencies (select those that are relevant to the position; examples)
- Spelling and expression



## Direct entry

- Wide variety of possible entry roles, tasks and responsibility for projects from the beginning
- On-the-job training by experienced colleagues and advanced seminars
- Onboarding Program **BE PART** for a smooth start
  - Getting started (the first 100 days)
  - Getting up to speed (the first year)
  - Working & developing (after one year)



## Trainee Program

### Insights & Responsibility

- Personal and professional support from a mentor
- Duration: **18–36 months**
- Start: flexible and depending on availability of the applicant
- In-depth insights into various roles, BASF areas or countries with assignment of responsibilities from the beginning



## Explore Together

### The International Internship



- Duration: **3–6 months**
- Completing final years of Bachelor or Master, relevant internships, very good English language skills, ideally target country language skills, volunteer work and international experience
- Attractive benefits package including payment of flights and visas
- Apply online for advertised positions approx. 6 months in advance

## Internships & Thesis Projects



- Practical experience over **3–6 months**
- Induction sessions, plant tours, regular get-togethers and lectures from specialists
- Possible to combine internships with thesis projects (in Germany)
- Apply online 2–4 months in advance – speculative applications possible

# Entry possibilities for engineers

## IDEA



## Research & Development

Research Engineer  
As unit expert or process developer, you work out new processes or optimize existing ones (upstream/downstream & upscaling) to be used by engineering for carrying out capital projects.



## Capital Projects

Process-/Discipline-/Project Engineer  
As a member of a project team you will contribute with your expertise to implement investment projects from the planning to commissioning.

## Maintenance

As Maintenance Engineer you ensure the availability of the production and infrastructure facilities and develop customer-specific solutions to optimize operations.



## Montage

The Installation unit offers services in the areas of construction, maintenance and shutdown planning/execution, as well as product-independent coordination of all construction disciplines.



## PRODUCTION PLANT



## Operations

Asset-/Process-Manager  
You ensure production and further development of the plant.



## Technical Expertise Unit

Technical Expert works on generating tailor-made engineering solutions for production, research and service units, in areas such as Electrical & Instrumentation (e.g. Automation and Process Control), Mechanical (e.g. Quality and Materials Eng.) and Machinery (e.g. Maintenance & Reliability).



# Application process



# BASF at a glance

**BASF**  
We create chemistry

## Employees:

**111.047** employees  
worldwide **3,174** apprentices



more than  
**51,000** employees  
in Germany



## Production:



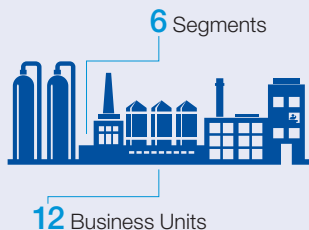
**Intelligent Verbund principle**

**Production – Technology – Market – Digitalization**

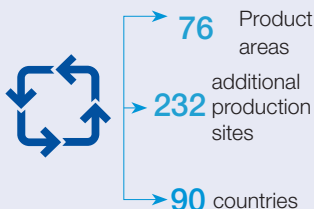
more than **90,000** customers  
worldwide

over **75,000** suppliers

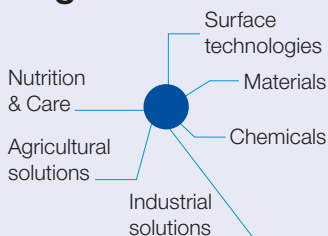
## Organization:



## Verbund system:



## Segments:



**We create chemistry for a sustainable future.**



## Finances:

Sales: **€78,6** | EBIT: **€7,8** bn



## Sustainability:

Expenditure on  
environmental protection around **€328** m



Environmental relief  
from saving energy: **6.4** m tons CO<sub>2</sub>

Involved in **UN Global Compact** since

## Innovation:

Expenditure on  
Research & Development **€2,2** bn



more than **10,000** Employees  
in the area  
Research & Development

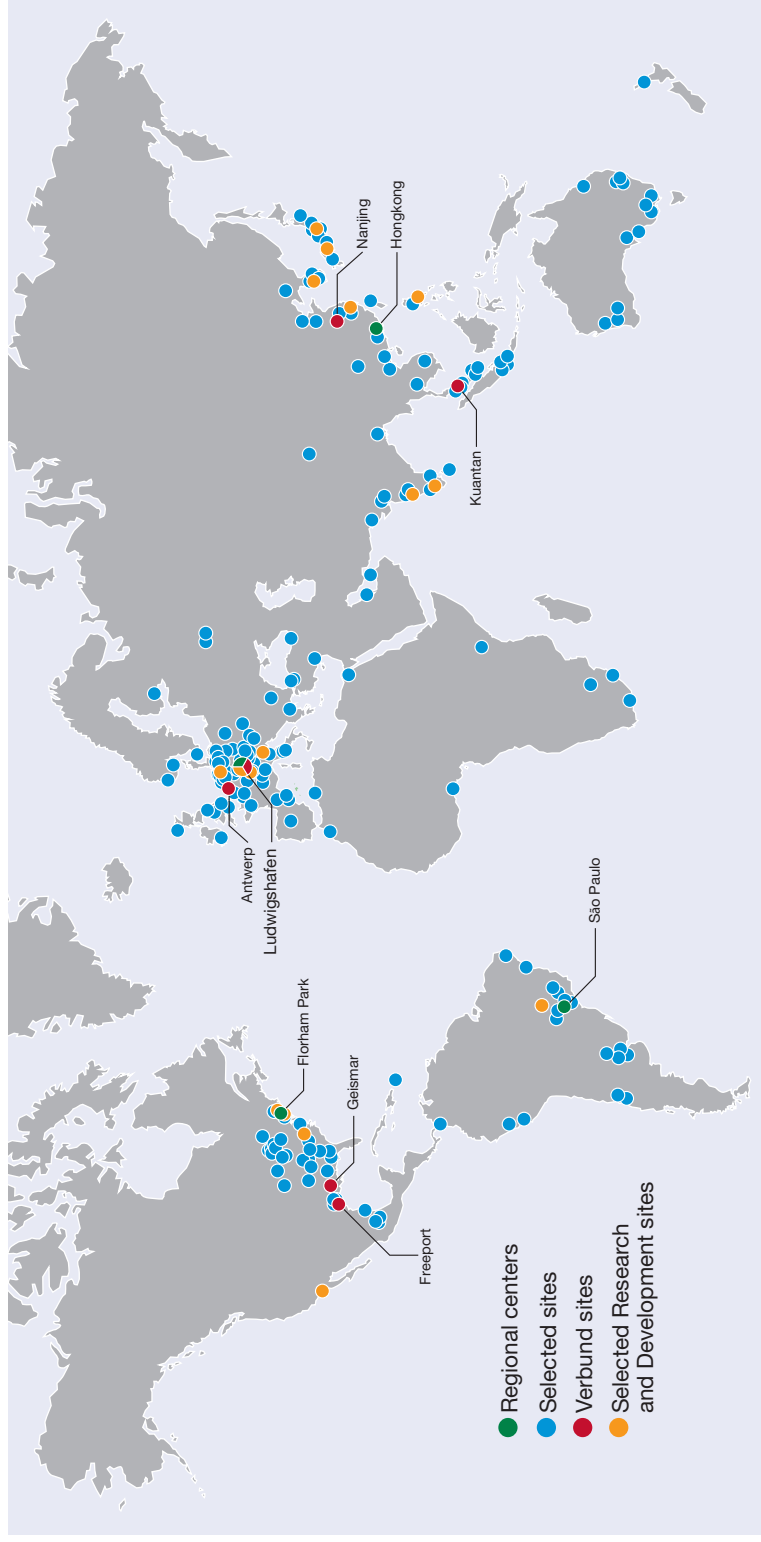
around **1,000** patents

about **3,000** production facilities

# BASF at a glance



We create chemistry



# Sites in Germany





# Ludwigshafen site



**~ 34.405**

BASF SE  
employees



**~ 230 km**

of tracks



**~ 2,000**

buildings



**~ 106 km**

of roads



**~ 200**

production  
facilities



**~ 2,850**

pipeline  
systems



**Several  
thousand**

products are  
created at the site



**8.5 m tons**

of finished products  
per year

- Largest integrated chemical complex in the world
- Birthplace of the Verbund concept
- Intelligent networking of production facilities, energy flows and logistics
- Resources used as efficiently as possible

# Daily life at BASF



As the leading chemical company, we work on products every day for a sustainable future and we're busy today finding solutions for tomorrow's problems. Innovations in chemistry play a critical role and make a lasting contribution to existing and future solutions in almost all industry segments.



## Notes



We create chemistry

[illegible]

**[www.basf.com/career](http://www.basf.com/career)**

Phone

00800 – 33 0000 33  
(free of charge in Europe)

WhatsApp

+49 176 42067319

E-Mail

[jobs@basf.com](mailto:jobs@basf.com)

