



Our world is constantly changing  
The world needs solutions  
**We need you**

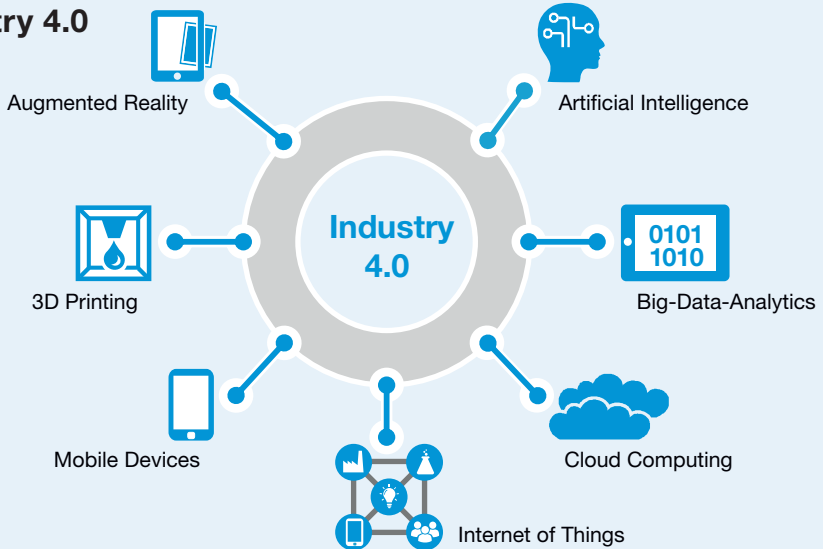
 **BASF**

We create chemistry

## Areas



## Industry 4.0



## Direct entry

- Wide variety of possible entry roles, tasks and responsibility for projects from the beginning
- On-the-job training by experienced colleagues and advanced seminars
- Onboarding Program **BE PART** for a smooth start
  - Getting started (the first 100 days)
  - Getting up to speed (the first year)
  - Working & developing (after one year)



## Explore Together

### Our International Program

- Duration: **3–6 months**
- Completing final years of bachelor's or master's degree, relevant previous internships, very good English language skills, ideally target country language skills, volunteer work and international experience
- Attractive benefits package including payment of flights and visas
- Apply online for advertised positions approx. 6 months in advance



## Internships & Thesis Projects

- Practical work experience related to project over **3–6 months**
- Induction sessions, plant tours, regular get-togethers and lectures from specialists
- Possible to link internships with thesis projects (in Germany)
- Apply online 2–4 months in advance – speculative applications possible



# BASF at a glance

**BASF**  
We create chemistry

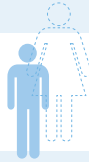
## Employees:

**122,404** employees worldwide

**3,174** apprentices

more than

**50,000** employees in Germany



## Production:



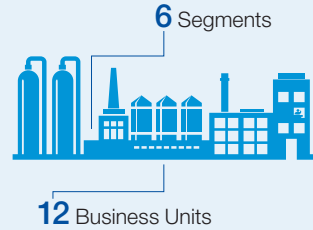
**Intelligent Verbund principle**

**Production – Technology – Market – Digitalization**

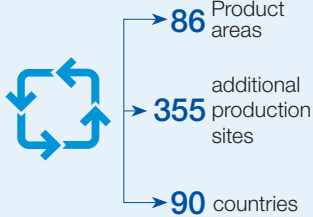
more than **90,000** customers worldwide

over **70,000** suppliers

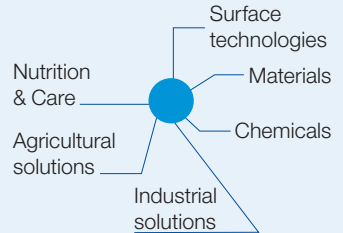
## Organization:



## Verbund system:



## Segments:



We create chemistry for a sustainable future.



## Finances:

Sales: **€62.7** bn | EBIT: **€6.4** bn



## Innovation:

Expenditure on Research & Development **€2** bn



## Sustainability:

Expenditure on environmental protection around **€277** m



Environmental relief from saving energy: **6.3** m tons CO<sub>2</sub>

Involved in **UN Global Compact** since

more than **11,000** Employees in the area Research & Development

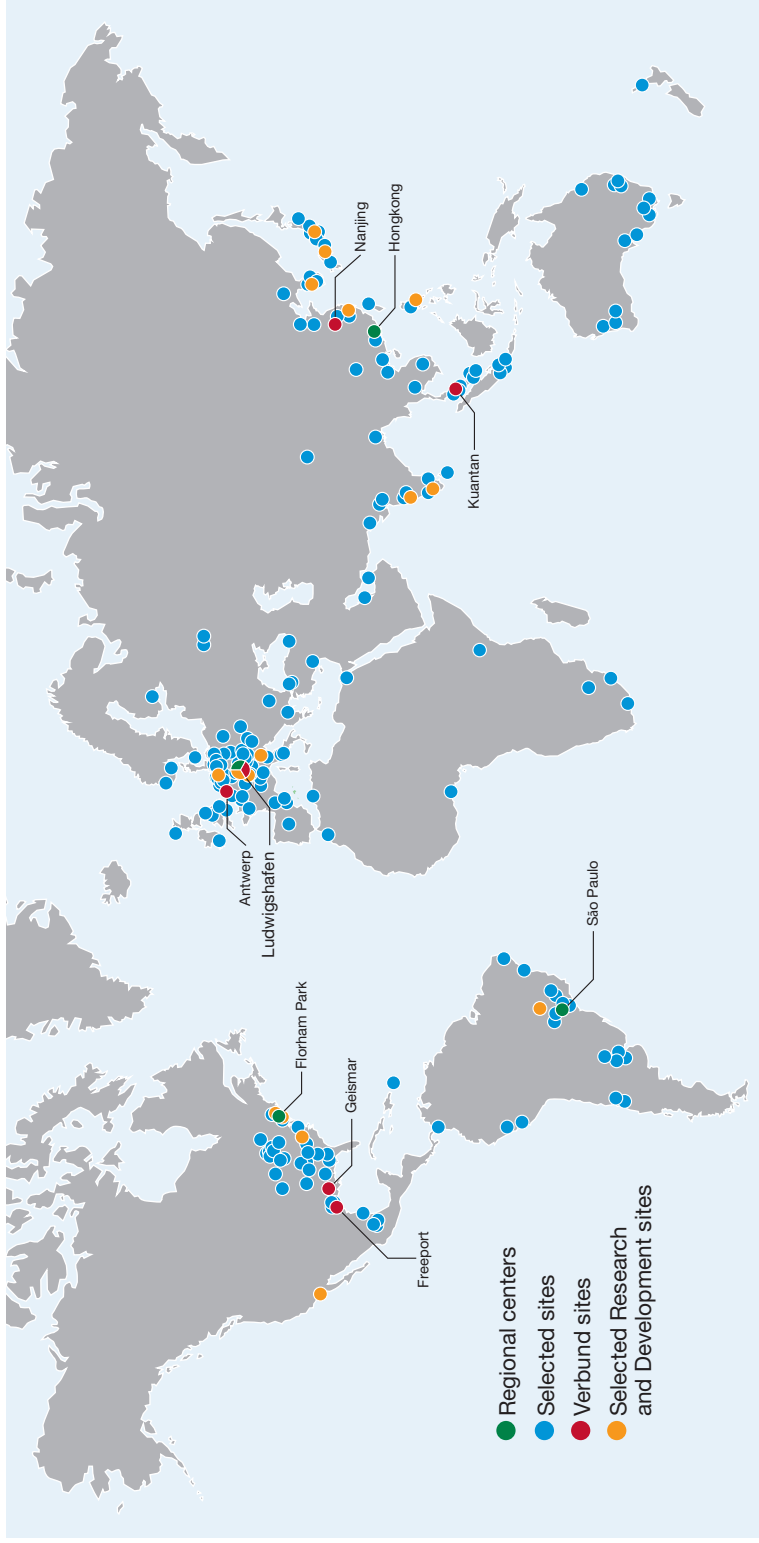
around **900** patents

about **3,000** production facilities

# BASF at a glance



We create chemistry



# Sites in Germany

**BASF**

We create chemistry



# Ludwigshafen site

**BASF**

We create chemistry



~ **35,000**

BASF SE  
employees



~ **230 km**

of tracks



~ **2,000**

buildings



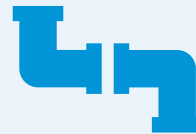
~ **106 km**

of roads



~ **200**

production  
facilities



~ **2,850**

pipeline  
systems



**Several  
thousand**

products are  
created at the site



**8.5 m tons**

of finished products  
per year

- Largest integrated chemical complex in the world
- Birthplace of the Verbund concept
- Intelligent networking of production facilities, energy flows and logistics
- Resources used as efficiently as possible

# Daily life at BASF

**BASF**  
We create chemistry

As the leading chemical company, we work on products every day for a sustainable future and we're busy today finding solutions for tomorrow's problems. Innovations in chemistry play a critical role and make a lasting contribution to existing and future solutions in almost all industry segments.





# Application process



# Notes

---

---

---

---

---

---

---

---

---

---

---

---

---

---

---

---

---

---

---

---

---

---

---

---

---

---



# Notes



A large, light blue rectangular area containing 20 horizontal blue lines for writing notes.



[www.basf.com/career](http://www.basf.com/career)

Phone

00800 – 33 0000 33  
(free of charge in Europe)

WhatsApp

+49 176 42067319

E-Mail

[jobs@basf.com](mailto:jobs@basf.com)

