

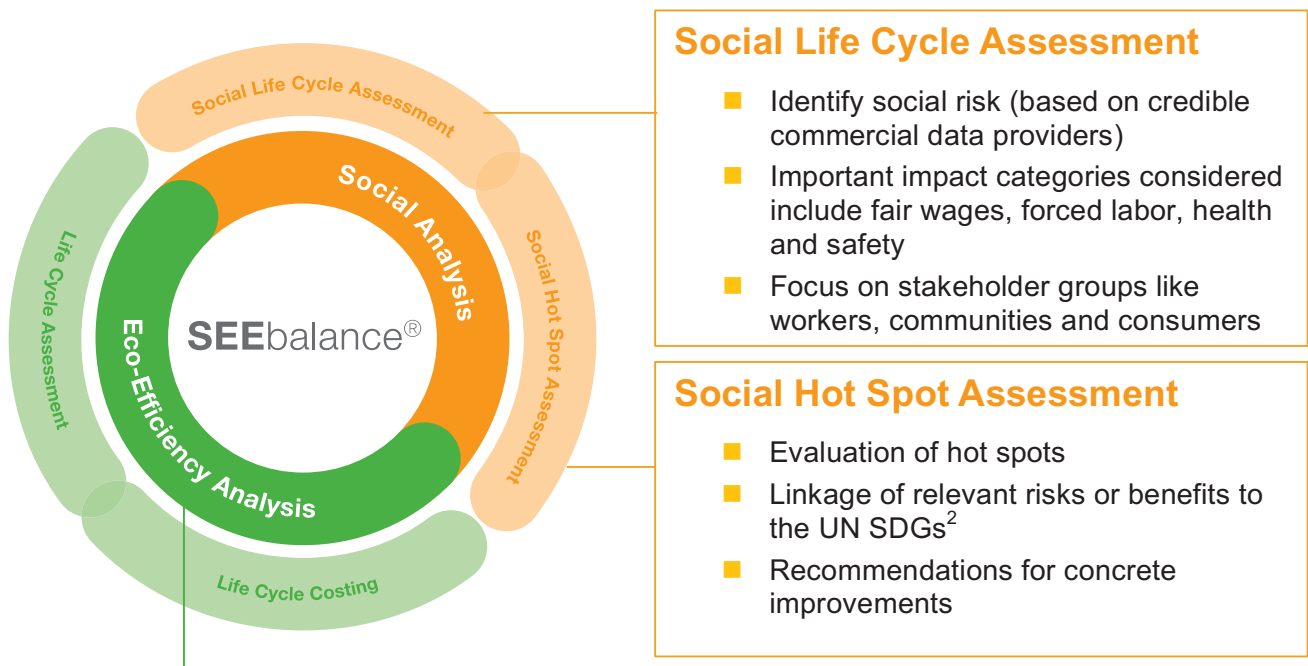


Assessment of three sustainability dimensions

SEEbalance® was developed as a quantitative evaluation method of SocioEcoEfficiency by BASF in 2005.

SEEbalance® is BASF's comprehensive approach to assess the social, environmental and economic aspects of products or processes covering the entire life cycle.

Depending on the question, the four modules¹ of the SEEbalance® can be applied individually or in combination.



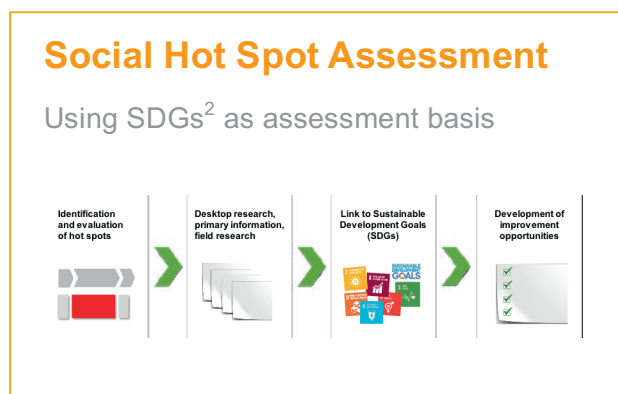
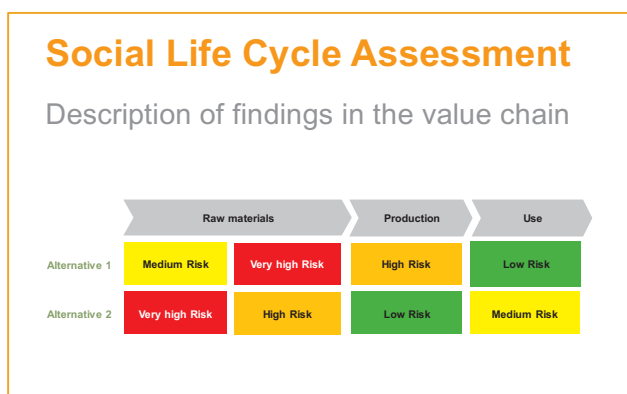
Eco-Efficiency Analysis

- Assess sustainability performance of different products and processes following ISO 14045
- Combine environmental impacts according to ISO 14040/44 and costs in a life cycle approach
- Reduce complex information to decision-oriented charts and graphs

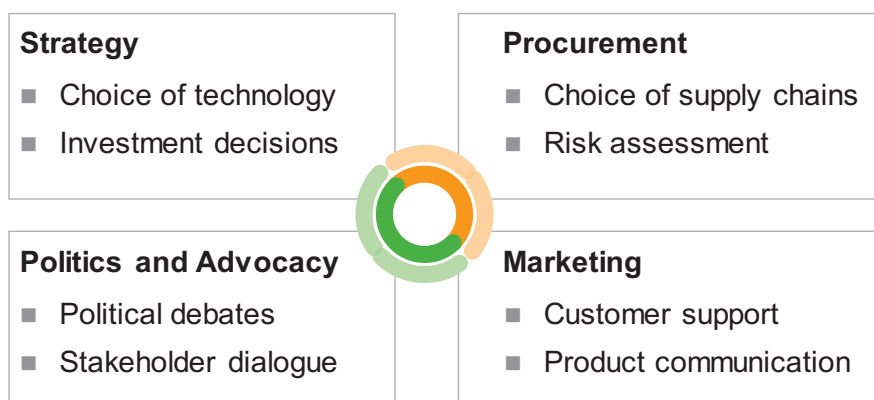
¹ Social Life Cycle Assessment, Social Hot Spot Assessment, Life Cycle Costing, Life Cycle Assessment

² SDGs: UN Sustainable Development Goals

In 2017, SEEbalance[®] was updated for an improved assessment of social aspects. The new Social Analysis uses assessment approaches in line with the latest developments for social life cycle assessment³.



SEEbalance[®] application fields



SEEbalance[®] supports decision makers in identifying the sustainability benefits and trade-offs along the value chain of products or processes.

For further information, please do not hesitate to contact us at seebalance@basf.com or visit our homepage www.basf.com/sustainability.

³ The Roundtable for Product Social Metrics, WBCSD Social Life Cycle Metrics for Chemical Products and UNEP/SETAC